

LiliBend

DATE _____
 PROJ. _____
 FIRM _____

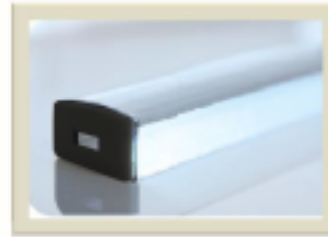
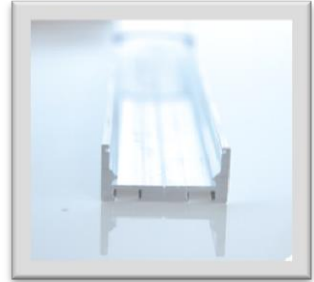
TYPE

MC-001 Flat Mounting Channel

The Profile Mounting Extrusion was created to fit many design applications. The Profile Mounting Extrusion is made of anodized aluminum and designed to fit a variety of lens options or to be used without one for complete flexibility and ease of installation. The Channel has sunken screw holes and can be cut in field. Also comes with a protective film to be removed when applying the adhesive tape.

Technical Information

| | |
|--------------|--|
| Finish: | Silver Anodized Aluminum |
| Lens: | Ordered Separately Dome Full Frost Snap in lens Flat Semi Frost Snap in lens |
| Mounting: | Sunken Screw holes for masonry or wood screws |
| Accessories: | End Caps included with lens options |
| Length: | 48"/ 1219mm |



Mounting Channel

| Model # | Description |
|---------|------------------------------|
| MC-001 | Flat Mounting Channel |
| MC-045 | 45 Degree Mounting Accessory |
| FL-900 | Flat Semi Frost Lens |
| DL-400 | Dome Diffused Lens |

Dimensions

