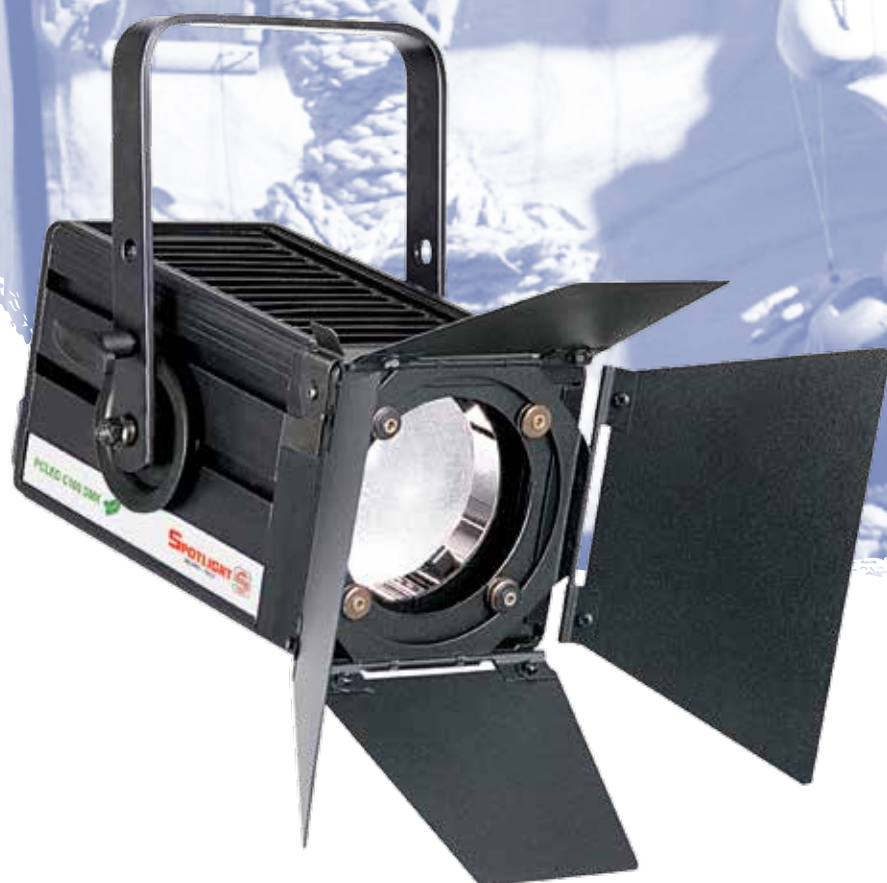


PCLED 100 COMPACT

A new fixture of compact size especially suitable for architectural and commercial installations, can work perfectly also in theatre, film and TV applications.



TECHNICAL SPECIFICATIONS



ENTERTAINMENT



ARCHITECTURAL



GREENLINE

PCLED 100 COMPACT

Available in two different versions:

- dimmable from the mains as a normal halogen fixture
- dimmable through DMX and local potentiometer

Option of 3 different colour temperatures: Warm 3000K, Natural 4000K, Cool 5000K

Zoom from 8° spot to 87° extremely even flood

Light output higher than 500W halogen lamps.

- | | |
|---|---|
| <input type="checkbox"/> Halogen, Mains | <input checked="" type="checkbox"/> LED White |
| <input type="checkbox"/> Halogen, Low Voltage | <input type="checkbox"/> LED Tunable White |
| <input type="checkbox"/> Discharge | <input type="checkbox"/> LED RGB |
| | <input type="checkbox"/> LED RGBW |

All the world is a stage.

PCLED 100 COMPACT

Due to a new ventilation system and a better heat dissipation thanks to the housing in die-cast and extruded aluminium, this luminaire has a very compact design that is largely appreciated in architectural applications.

The high shocks and corrosion resistance makes this fixture a professional tool for rental companies and for any heavy applications.



- ✓ The small size and the high efficiency of PCLED 100 Compact make it ideal when space and energy saving are key factors
- ✓ The extra long life of the light sources, more than 30.000 hours, practically cancels the maintenance cost especially where the lamp replacement is uneasy
- ✓ The total absence of ultraviolet rays is essential to avoid damaging items in shop windows or ancient and valuable products in museums and let any colour filter in front of it live without fading for a nearly unlimited time.
- ✓ The very smooth dimming control in DMX let it be coordinated with any other kind of intelligent light.
- ✓ The "White Warm" version can be successfully employed together with other conventional tungsten lamps both in architectural installations and in TV- theatre-studio applications saving a lot of energy and heat
- ✓ The high efficiency daylight version can be used as outdoor fill light in TV and film shoots, or in conjunction with other discharge fixtures, such as accent light for indoor applications
- ✓ The perfect dimming capability makes it the only daylight source inherently dimmable without any external mechanical support and without any colour temperature shift
- ✓ Real further energy saving when dimming, since the reduction of light corresponds to the real reduction of the costs
- ✓ Clean light sources without mercury and radioactive components
- ✓ Use of the same accessories of the standard Sintesi range (barn door, filter holder, hooks, etc)



Warm White
100W, 7030 Lumen,
CRI 80, 3000K, zoom 8° - 87° (*)



Natural White
100W, 7410 Lumen,
CRI 80, 4000K, zoom 8° - 87° (*)



Cool White
100W, 7510 Lumen,
CRI 80, 5000K, zoom 8° - 87° (*)

ACCESSORIES

- Colour filter frame
- 4 leaf barn door
- DMX scroller colour changer
- Hook clamps for 30 - 50 mm. trusses
- Safety rope with spring hook

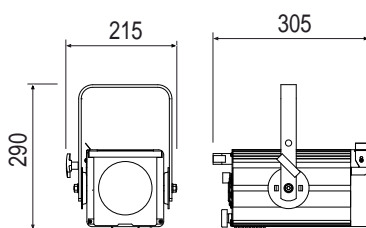
OPTIONS

- Pole operated yoke version
- DMX motorised yoke version

ELECTRICAL SPECIFICATIONS

100W, 100-240V, 50/60Hz

DIMENSIONS (mm) AND WEIGHT



Kg 3,7

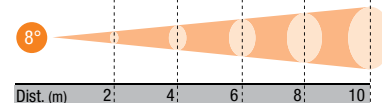


Rear view of DMX version

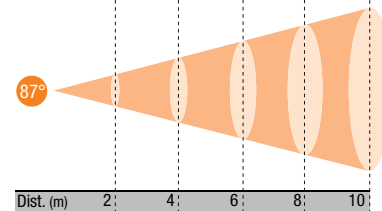
PHOTOMETRIC DATA (*)

Warm White version

Lux	12.600	3.150	1.400	788	504
∅ (m)	0,3	0,6	0,8	1,1	1,4



Lux	833	208	93	52	33
∅ (m)	3,8	7,6	11,4	15,2	19,0



(*) (performance according to LED available on May 2014)

Spotlight Srl - Via Sardegna 3 - 20098 - S. Giuliano Milanese - Milano - Italy
Tel. +39 02 98 83 055 - Fax +39 02 98 83 056 - sales@spotlight.it - www.spotlight.it

 certified quality management system ISO 9001:2008